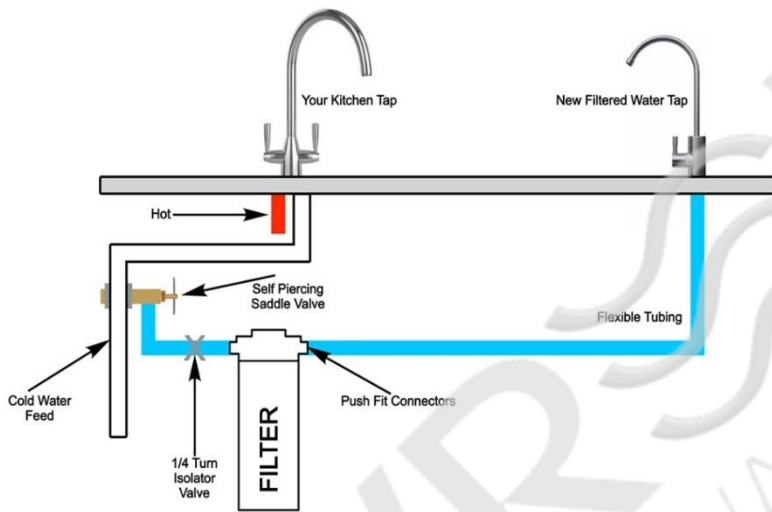


## Instructions for QC100 Quick Change Drinking Water System

This system is designed for DIY installation with no plumbing required.

Kit Contents	Tools Required
<ul style="list-style-type: none"> <li>• QC Cartridge Head x 1</li> <li>• QC100 Cartridge x 1</li> <li>• John Guest 3/8x1/4in Push Fit Stem Elbows x 2</li> <li>• Self-Piercing valve x 1</li> <li>• Inline John Guest 1/4in Isolator Valve</li> <li>• AT2S Deluxe Tap.</li> <li>• Self-Drilling Screws – 19mm x 2</li> </ul>	<ul style="list-style-type: none"> <li>• Spanner</li> <li>• Screwdriver</li> <li>• 12mm Drill bit and drill</li> </ul>

First of all, consider the layout required taking into account length of tubing and accessibility for future cartridge changes. A typical installation is in the diagram below.



© Wrekin Water Filtration 2017

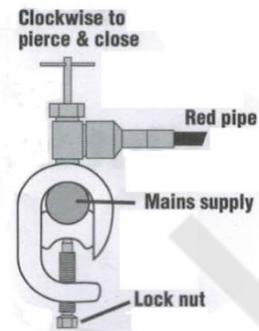
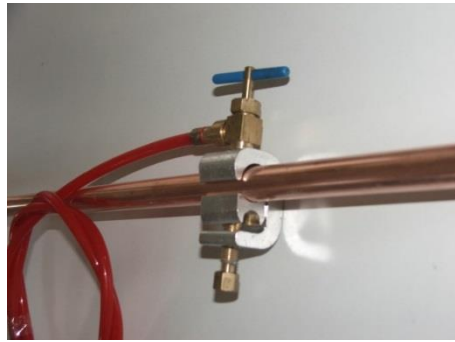
The cartridge head has flow direction indicators and it is very important for the safe operation of the system to ensure this is connected correctly. Please see the diagrams below. It is possible to change the flow direction by undoing the 4 screws and turning the control valve assembly if required



Flow direction can be swapped round by undoing the 4 retaining screws and flipping the cartridge control head



## Fitting the Self-tapping/Self-piercing Valve.



Before carrying out any work on the water supply it is recommended to turn off the main water supply at the main stop cock

Ensure that the self-tapping needle is fully retracted before positioning on the pipe and that the brass locking nut is in its open position.

Locate the G-Clamp STV valve on a suitable length of the cold water pipe (15mm). Slide in the profile bar and tighten sufficient that the valve is securely fixed. Do not overtighten to the point that the copper pipe is deformed.

Connect the red tube to the inlet port of the housing – Cut the red tubing near the inlet port and insert the John Guest isolator valve. This can be used in the future to turn off the water supply without the need to close the Self Piercing Valve which is invariably at the back of the cupboard and difficult to reach. As with all push fit fittings, the tube must be square and clean and ensure the tube is pushed fully into the socket.

## Fixing the Tap

The tap can be fitted on the corner of the sink, space permitting or through a worktop.

- 1) To fit the tap a 12mm Hole is required
- 2) There is a small O ring washer on the underside base of tap body. This provides a water tight seal to the worktop or sink
- 3) Place tap into position and secure to sink/Counter Top using the following in order
  - a. large rubber washer
  - b. Metal Washer
  - c. Grip ring
  - d. Nut.
  - e. Tighten securely in place so the tap is firm
- 4) Assemble the blue 1/4" tubing into the Push Fit connector ensuring it is fully engaged.
- 5) Push the connector fully onto the fluted end of the tap stem
- 6) Finish the connection to the outlet port of the filter



## Changing the Cartridge

1. Turn the water supply off to the filter
2. Open up the tap to release the pressure
3. Twist the cartridge and pull out of the head
4. We recommend just wiping the inside of the head to clear any deposits that may have accumulated.
5. Push the new cartridge into the head and turn to lock into place
6. Slowly open the water supply and allow the cartridge to pressurise
7. Open the supply fully and check for leaks
8. Open up the tap and run some water off to remove any carbon fines left over from the manufacturing process